

**Jacaranda Carpets Limited**

1 Cockerel Rise, Desborough, Northamptonshire NN14 2WE, UK

**Tel:** +44 (0)1536 762 697 **Email:** [sales@jacarandacarpets.com](mailto:sales@jacarandacarpets.com) **Web:** [www.jacarandacarpets.com](http://www.jacarandacarpets.com)

**Jacaranda Showroom** at Design Centre Chelsea Harbour, Unit 2/9, 2nd Floor South Dome, London SW10 0XE **Tel:** +44 (0)207 351 6496

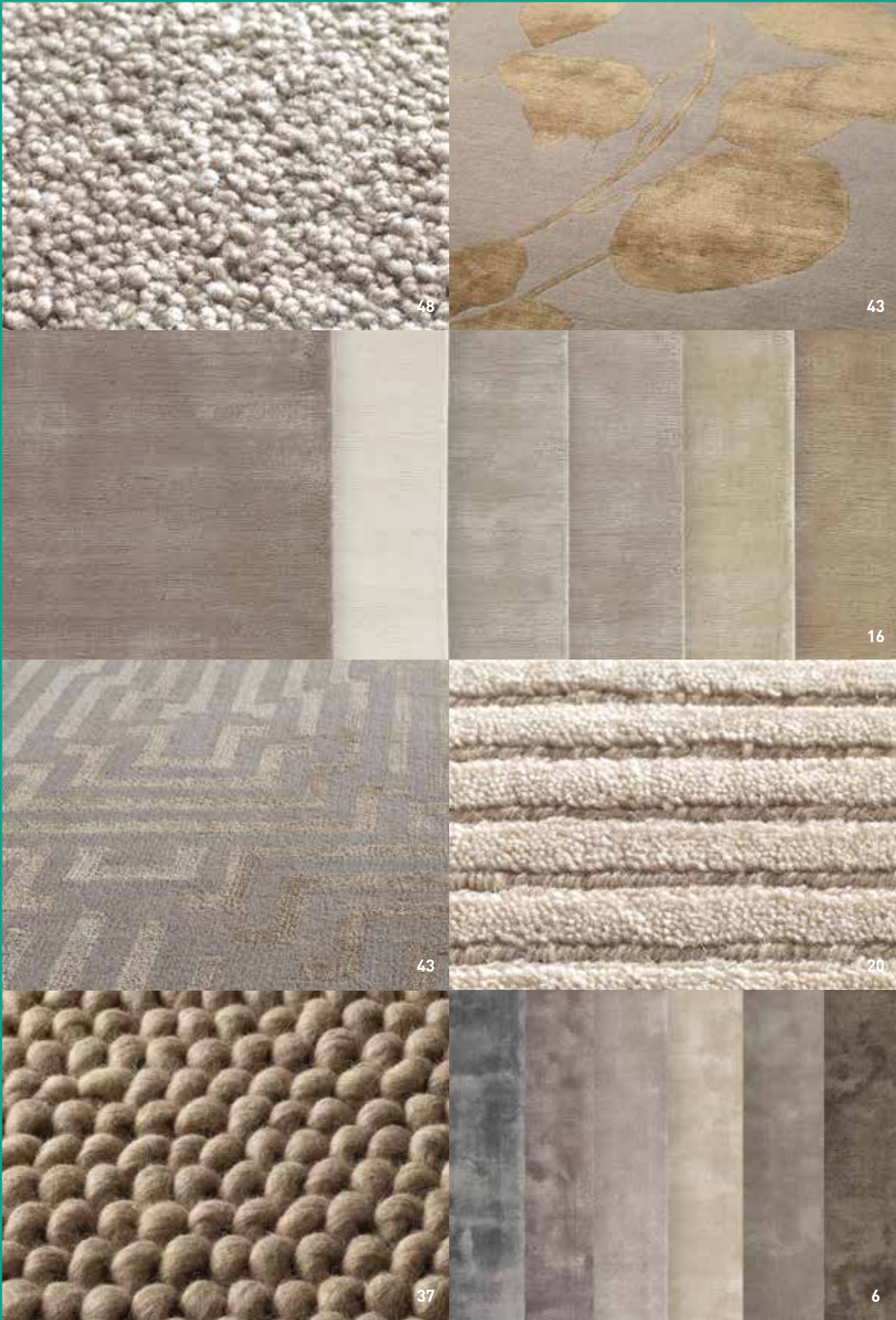
For International distributors please visit [www.jacarandacarpets.com](http://www.jacarandacarpets.com)



English version 2017

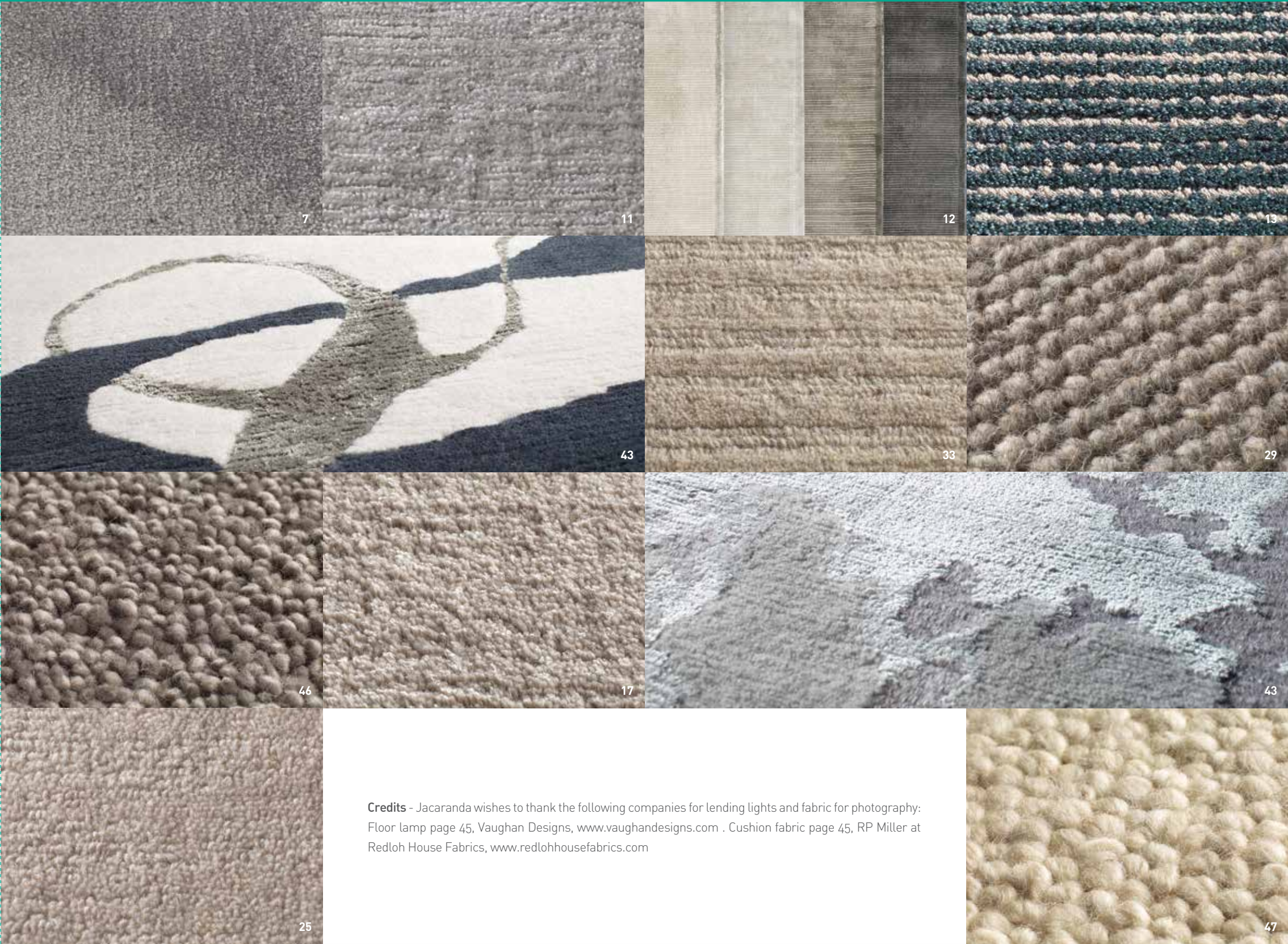






## CONTENTS

<b>3</b>	<b>HAND-WOVEN CARPETS &amp; RUGS</b>	<b>42</b>	<b>HIMALAYAN HAND-KNOTTED RUGS</b>
Sikkim	4-5	Ordering from stock or made-to-measure	43
Simla	6-7	Hand-knotting explained	44
Simla Stripe	8		
Simla Bordered	9		
Santushti	10-11		
Chatapur	12-13		
Udaipur	14-15		
Agra	16-17	Mayfield	46
Rajgarh	18-19	Mavora	47
Ranila	20	Milford	48
Rampur	21	Midhurst	49
Satpura Stripe	22-23	Seville Wilton Velvet	50
Willingdon	24-25	Salamanca Wilton	50
Otto	26-27	Natural Weave Hexagon	51
Abha	28-29	Natural Weave Square	51
Samode	30		
Sambar	30		
Heavy Velvet	31		
Bilpar	32		
Chamba	33	Broadloom specification summary	52-55
Chandigarh	33	Choosing and ordering	56
Velvet Stripe	34	Delivery and fitting	57
Kasari Velvet	34	Carpet care	58
Chunky Velvet	35		
Lustre	36		
Pebbles	37		
Bespoke rugs made-to-measure at source	38		
Bespoke rugs made-to-measure from UK broadloom stock	39		
Why choose handmade floorcoverings?	40-41		



**Credits** - Jacaranda wishes to thank the following companies for lending lights and fabric for photography:  
Floor lamp page 45, Vaughan Designs, [www.vaughandesigns.com](http://www.vaughandesigns.com) . Cushion fabric page 45, RP Miller at Redloh House Fabrics, [www.redlohousefabrics.com](http://www.redlohousefabrics.com)





HAND-WOVEN CARPETS & RUGS





# SIKKIM

Hand-woven broadloom and rugs

## Sikkim rugs

**Stock rug sizes:** 120 x 180cm, 170 x 240cm,  
200 x 250cm, 200 x 300cm, 250 x 350cm

Colour match service available (page 56)

Also available made-to-measure (pages 38 & 39)

**Pile material:** 100% TENCEL®

**Gross pile weight:** 3250g/m<sup>2</sup>

**Backing:** Cotton



All rugs GoodWeave™ certified

Explanation page 56



**New** left to right: Cloudy Grey, Eggshell, Grey, Pearl, Opal, Teal Blue



**New** left to right: Lavender, Snow, Sage, Oatmeal, Pewter, Starlight

< **New** Sikkim Teal Blue rug

[www.jacarandacarpets.com](http://www.jacarandacarpets.com)



Sikkim broadloom

**Stock broadloom widths:** 4 & 5m  
**Pile material:** 100% TENCEL®  
**Gross pile weight:** 3250g/m²  
**Backing:** Cotton

When fitting Sikkim lines may run out along seams

TENCEL® is spun from cellulose, its fibres reflect light to look like silk. TENCEL® wears better and is more water tolerant than viscose, but is not recommended for wet areas

Colour match service available (page 56)

Clean by dry extraction methods only

Broadloom specification



Explanation pages 52-55



New Grey



New Snow



New Eggshell



New Grey



New Pearl



New Cloudy Grey



New Sage



New Oatmeal



New Opal



New Lavender



New Teal Blue



New Pewter



New Starlight







# SIMLA

Hand-woven broadloom and rugs

## Simla rugs

**Stock rug sizes:** 120 x 180cm, 170 x 240cm,  
200 x 250cm, 200 x 300cm, 250 x 350cm

Colour match service available (page 56)

Also available made-to-measure (pages 38 & 39)

**Pile material:** 100% TENCEL®

**Gross pile weight:** 4000g/m²

**Backing:** Cotton



All rugs GoodWeave™ certified

Explanation page 56



Left to right: Steel Grey, Silver, Eggshell, Wheat, Oatmeal, Taupe, Fern, Tapenade, Charcoal



Left to right: Atlantic Blue, Lavender, Cloudy Grey, Grey, Ivory, Opal, Pewter, Storm, Gunmetal

<Simla Gunmetal rug on Chatapur Iron broadloom (page 13)

[www.jacarandacarpets.com](http://www.jacarandacarpets.com)



## Simla broadloom

**Stock broadloom widths:** 4 & 5m

**Pile material:** 100% TENCEL®

**Gross pile weight:** 4000g/m²

**Backing:** Cotton

TENCEL® is spun from cellulose, its fibres reflect light to look like silk. TENCEL® wears better and is more water tolerant than viscose, but is not recommended for wet areas

Colour match service available (page 56)

Simla pile will crush and move to reflect light in different directions and give the appearance of silk velvet

Not suitable for heavy traffic areas or where water may cause stains

Clean by dry extraction methods only

Broadloom specification



Explanation pages 52-55



Storm



Eggshell



Ivory



Wheat



Oatmeal



Opal



Atlantic Blue



Grey



Silver



Storm



Pewter



Cloudy Grey



Taupe



Fern



Gunmetal



Lavender



Tapenade



Steel Grey



Charcoal

Tel: +44 (0)1536 762 697

Simla Atlantic Blue broadloom >







# SIMLA STRIPE

Hand-woven rugs

## Simla Stripe rugs

### Stock rug sizes:

120 x 180cm - stripe width 25cm

170 x 240cm - stripe width 35cm

200 x 250cm - stripe width 40cm

200 x 300cm - stripe width 40cm

250 x 350cm - stripe width 50cm

Also available made-to-measure at source (page 38)

**Pile material:** 100% TENCEL®

**Gross pile weight:** 4000g/m²

**Backing:** Cotton



All rugs GoodWeave™ certified

Explanation page 56

TENCEL® is spun from cellulose, its fibres reflect light to look like silk. TENCEL® wears better and is more water tolerant than viscose, but is not recommended for wet areas

Colour match service available (page 56)

Simla pile will crush and move to reflect light in different directions and give the appearance of silk velvet

Not suitable for heavy traffic areas or where water may cause stains

Clean by dry extraction methods only



Left to right: Oatmeal & Ivory, Taupe & Oatmeal, Charcoal & Steel Grey

<Simla Stripe Charcoal & Steel Grey rug on Sambar Silver broadloom (page 30)



# SIMLA BORDERED

Hand-woven rugs

## Simla Bordered rugs

**Stock rug sizes:** border width  
200 x 250cm - outside 18cm, inside 17cm  
250 x 350cm - outside 22cm, inside 21cm  
300 x 400cm - outside 26cm, inside 25cm  
Also available made-to-measure at source  
(page 38)

**Pile material:** 100% TENCEL®

**Gross pile weight:** 4000g/m²

**Backing:** Cotton



All rugs GoodWeave™ certified  
Explanation page 56

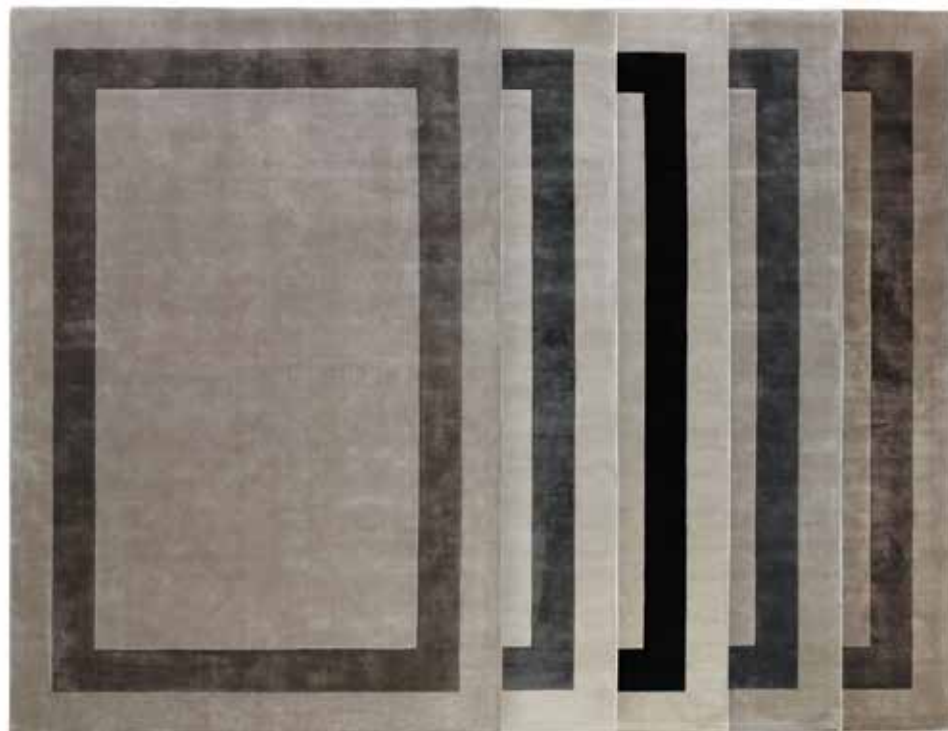
TENCEL® is spun from cellulose, its fibres reflect light to look like silk. TENCEL® wears better and is more water tolerant than viscose, but is not recommended for wet areas

Colour match service available (page 56)

Simla pile will crush and move to reflect light in different directions and give the appearance of silk velvet

Not suitable for heavy traffic areas or where water may cause stains

Clean by dry extraction methods only



**New** left to right: Grey & Pewter, Snow & Storm, Snow & Charcoal, Cloudy Grey & Gunmetal, Starlight & Graphite

Tel: +44 (0)1536 762 697

**New** Simla Bordered Starlight & Graphite rug >







# SANTUSHTI

Hand-woven broadloom and rugs

## Santushti rugs

**Stock rug sizes:** 170 x 240cm, 200 x 250cm,  
200 x 300cm, 250 x 350cm

Border width 2.5cm

Also available made-to-measure (pages 38 & 39)

**Pile material:** 100% TENCEL®

**Gross pile weight:** 3000g/m²

**Backing:** Cotton

Colour match service available (page 56)



All rugs GoodWeave™ certified

Explanation page 56



New left to right: Wheat, Ivory, Ice, Platinum, Starlight, Storm, Graphite

<New Santushti Storm rug

[www.jacarandacarpets.com](http://www.jacarandacarpets.com)



Santushti broadloom

**Stock broadloom widths:** 4 & 5m  
**Pile material:** 100% TENCEL®  
**Gross pile weight:** 3000g/m²  
**Backing:** Cotton

TENCEL® is spun from cellulose, its fibres reflect light to look like silk. TENCEL® wears better and is more water tolerant than viscose, but is not recommended for wet areas

Colour match service available (page 56)

Clean by dry extraction methods only

Broadloom specification



Explanation pages 52-55



Starlight



Ivory



Platinum



Ice



Storm



Wheat



Graphite







# CHATAPUR

Hand-woven broadloom and rugs

## Chatapur rugs

**Stock rug sizes:** 120 x 180cm, 170 x 240cm,  
200 x 250cm, 200 x 300cm, 250 x 350cm

Border width 2.5cm

Also available made-to-measure (pages 38 & 39)

**Pile material:** 100% viscose

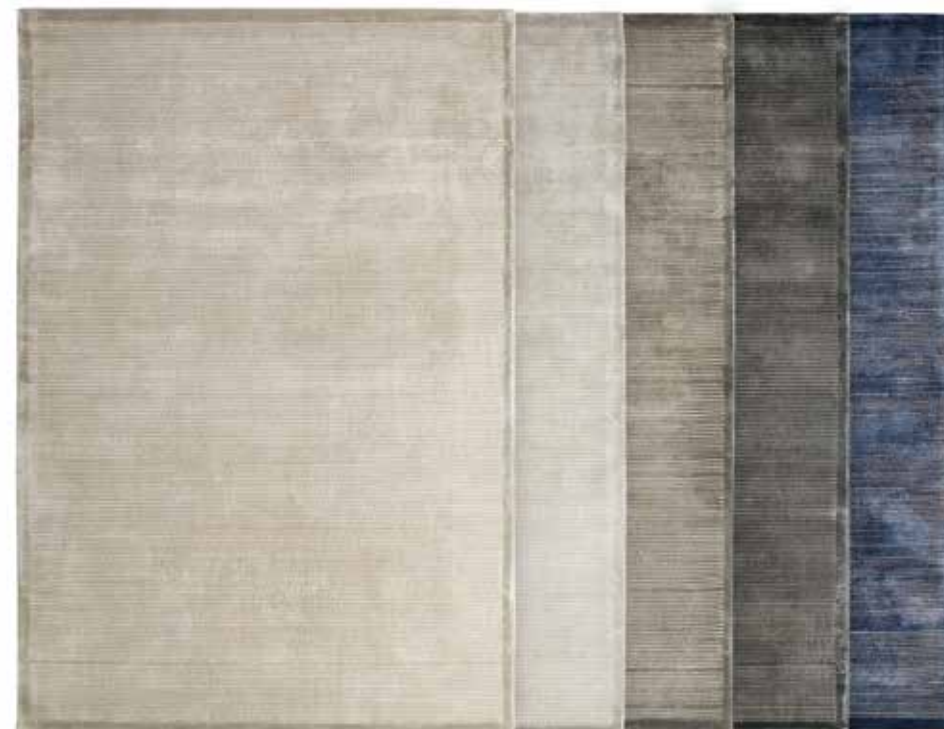
**Gross pile weight:** 3700g/m<sup>2</sup>

**Backing:** Cotton



All rugs GoodWeave™ certified

Explanation page 56



Left to right: Platinum, Zinc, Iron, Night, Marine & Grey

<Chatapur Night rug

[www.jacarandacarpets.com](http://www.jacarandacarpets.com)



## Chatapur broadloom

**Stock broadloom widths:** 4 & 5m

**Pile material:** 100% viscose

**Gross pile weight:** 3700g/m<sup>2</sup>

**Backing:** Cotton

It may not be perfectly possible to align lines along seams

Chatapur is not suitable for heavy traffic areas or where water may cause stains

Clean by dry extraction methods only

### Broadloom specification



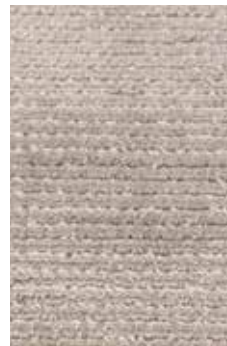
Explanation pages 52-55



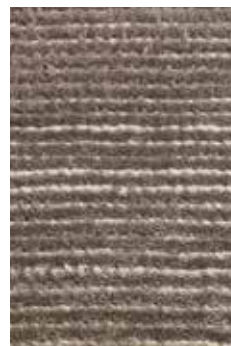
Marine & Grey



Platinum



Zinc



Iron



Night







# UDAIPUR

Hand-woven broadloom and rugs

## Udaipur rugs

**Stock rug sizes:** 120 x 180cm, 170 x 240cm,

200 x 250cm, 200 x 300cm, 250 x 350cm

Border width 2.5cm

Also available made-to-measure (pages 38 & 39)

**Pile material:** 100% viscose

**Gross pile weight:** 3700g/m<sup>2</sup>

**Backing:** Cotton



All rugs GoodWeave™ certified

Explanation page 56



Left to right: Blue & White, Blue & Green, Green & Navy, Green & Lavender, Green & Rose, Pink & Green, Pink & Lavender, Blue & Rose



## Udaipur broadloom

**Stock broadloom width:** 4m

**Pile material:** 100% viscose

**Gross pile weight:** 3700g/m<sup>2</sup>

**Backing:** Cotton

It may not be perfectly possible to align  
lines along seams

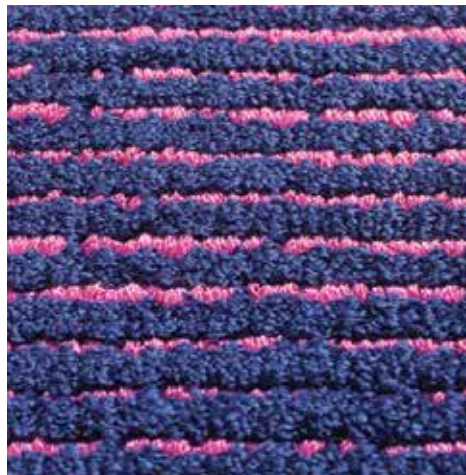
Udaipur is not suitable for heavy traffic areas or  
where water may cause stains

Clean by dry extraction methods only

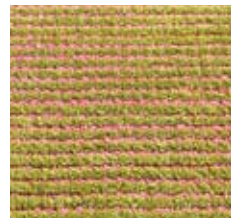
### Broadloom specification



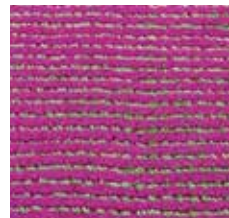
Explanation pages 52-55



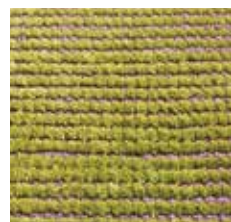
New Blue & Rose



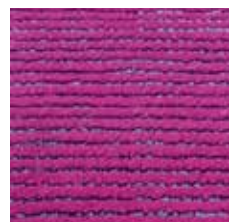
New Green & Rose



New Pink & Green



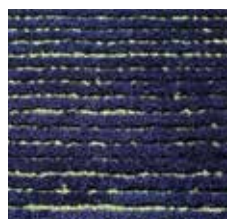
New Green & Lavender



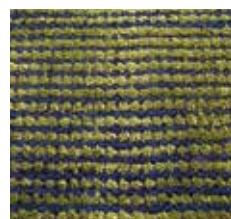
New Pink & Lavender



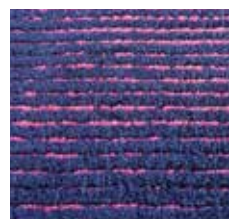
New Blue & White



New Blue & Green



New Green & Navy



New Blue & Rose







## AGRA

Hand-woven broadloom and rugs

### Agra rugs

**Stock rug sizes:** 120 x 180cm, 170 x 240cm,  
200 x 250cm, 200 x 300cm, 250 x 350cm

Also available made-to-measure (pages 38 & 39)

**Pile material:** 50% TENCEL® 50% wool

**Gross pile weight:** 5000g/m<sup>2</sup>

**Backing:** Cotton

Colour match service available (page 56)



All rugs GoodWeave™ certified  
Explanation page 56



New left to right: Cloudy Grey, Taj, Ice, Platinum, Oyster, Oatmeal

<New Agra Oyster rug

[www.jacarandacarpets.com](http://www.jacarandacarpets.com)



## Agra broadloom

**Stock broadloom widths:** 4 & 5m

**Pile material:** 50% TENCEL® 50% wool

**Gross pile weight:** 5000g/m<sup>2</sup>

**Backing:** Actionbac

Due to its weight, Agra should be fitted by the double stick method

Broadloom specification



Explanation pages 52-55

TENCEL® is spun from cellulose, its fibres reflect light to look like silk. TENCEL® wears better and is more water tolerant than viscose, but is not recommended for wet areas

Colour match service available (page 56)

Not suitable for heavy traffic areas or where water may cause stains

Clean by dry extraction methods only



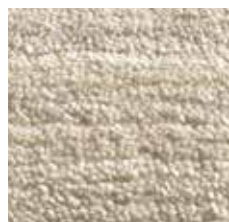
New Platinum



New Taj



New Ice



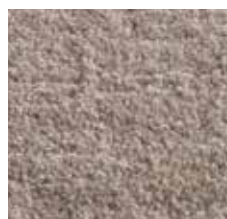
New Oyster



New Platinum



New Oatmeal



New Cloudy Grey

Tel: +44 (0)1536 762 697

New Agra Taj broadloom >







# RAJGARH

Hand-woven broadloom and rugs

## Rajgarh bordered rugs

**Stock rug sizes:** border width

200 x 250cm - outside 18cm, inside 17cm

250 x 350cm - outside 22cm, inside 21cm

300 x 400cm - outside 26cm, inside 25cm

Also available made-to-measure at source (page 38)

**Pile material:** 60% viscose 40% wool

**Gross pile weight:** 3200g/m<sup>2</sup>

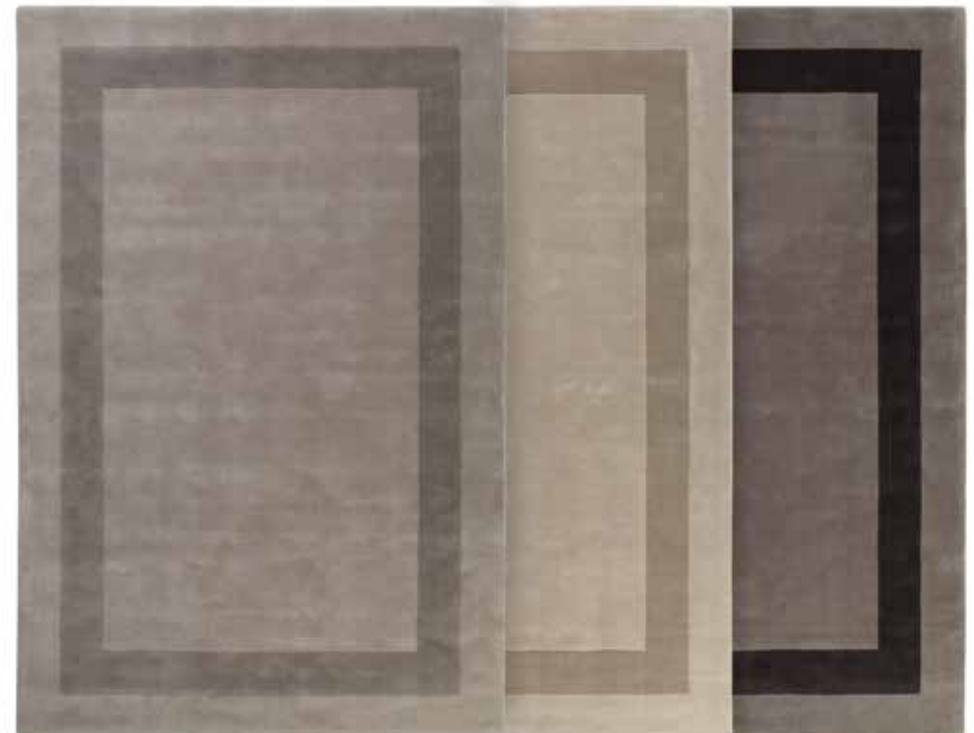
**Backing:** Cotton

Colour match service available (page 56)



All rugs GoodWeave™ certified

Explanation page 56



New left to right: Ice & Pewter, Eggshell & Silver, Pewter & Charcoal

<New Rajgarh Bordered Eggshell & Silver rug

[www.jacarandacarpets.com](http://www.jacarandacarpets.com)



Rajgarh broadloom

**Stock broadloom widths:** 4 & 5m  
**Pile material:** 60% viscose 40% wool  
**Gross pile weight:** 3200g/m<sup>2</sup>  
**Backing:** Actionbac

Colour match service available (page 56)  
Rajgarh is not suitable for heavy traffic areas or where water may cause stains  
Clean by dry extraction methods only

Broadloom specification



Explanation pages 52-55



Oatmeal



Caramel



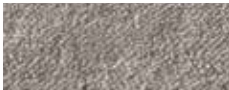
Dappled Brown



Tusk



Eggshell



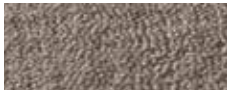
Silver



Pearl



Cloudy Grey



Dusky Grey



Oatmeal



Gunmetal



Dappled Grey



Pewter



Bronze



Charcoal







# RANILA

Hand-woven broadloom

## Ranila broadloom

**Stock broadloom widths:** 4 & 5m

Rugs made-to-measure (pages 38 & 39)

**Pile material:** 60% viscose 40% wool

**Gross pile weight:** 2200g/m<sup>2</sup>

**Backing:** Actionbac

When fitting Ranila, lines may run out along seams

Colour match service available (page 56)

Not suitable for heavy traffic areas or where water may cause stains

Clean by dry extraction methods only

## Broadloom specification



Explanation pages 52-55



Smoke



Ivory



Oatmeal



New Eggshell



Pearl



New Opal



Grey



Smoke



Fern



New Pewter



Taupe



New Gunmetal



New Night Blue

<Ranila Grey broadloom

[www.jacarandacarpets.com](http://www.jacarandacarpets.com)



# RAMPUR

Hand-woven broadloom

## Rampur broadloom

**Stock broadloom widths:** 4 & 5m  
**Rugs made-to-measure** (pages 38 & 39)  
**Pile material:** 60% viscose 40% wool  
**Gross pile weight:** 2200g/m<sup>2</sup>  
**Backing:** Actionbac

When fitting Rampur, lines may run out along seams

### Broadloom specification



Explanation pages 52-55

Colour match service available (page 56)

Not suitable for heavy traffic areas or where water may cause stains

Clean by dry extraction methods only



Grey



Ivory



Oatmeal



New Eggshell



Pearl



New Opal



Grey



Smoke



Wheat



New Pewter



Taupe



New Gunmetal



New Night Blue







# SATPURA STRIPE

Hand-woven broadloom and rugs

## Satpura Stripe rugs

**Stock rug sizes:** 120 x 180cm, 170 x 240cm,  
200 x 250cm, 200 x 300cm, 250 x 350cm

Also available made-to-measure (pages 38 & 39)

**Pile material:** 75% wool 25% viscose

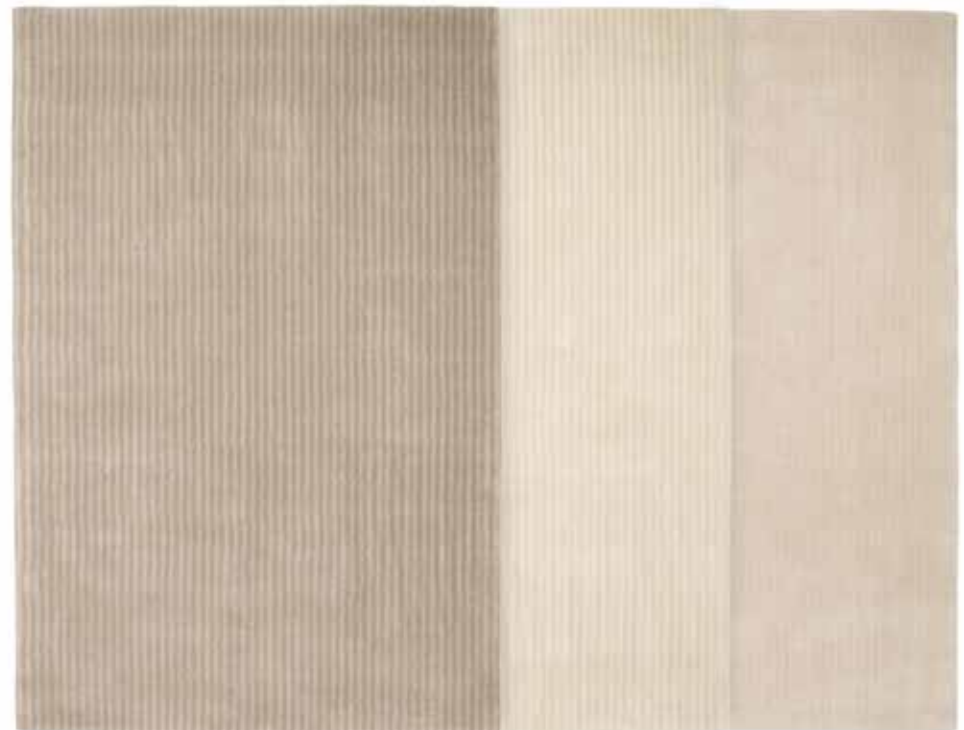
**Gross pile weight:** 3500g/m<sup>2</sup>

**Backing:** Cotton



All rugs GoodWeave™ certified

Explanation page 56



Left to right: Silver, Cream, Ivory

<|Satpura Stripe Cream rug

[www.jacarandacarpets.com](http://www.jacarandacarpets.com)



## Satpura Stripe broadloom

**Stock broadloom widths:** 4 & 5m

**Pile material:** 75% wool 25% viscose

**Gross pile weight:** 3500g/m<sup>2</sup>

**Backing:** Actionbac

Satpura Stripe is not suitable for bathrooms or wet areas

Clean by dry extraction methods only

### Broadloom specification



Explanation pages 52-55



Ivory



Cream



Silver

Tel: +44 (0)1536 762 697

Satpura Stripe Cream broadloom >







# WILLINGDON

Hand-woven broadloom and rugs

## Willingdon rugs

**Stock rug sizes:** 170 x 240cm, 200 x 250cm,  
200 x 300cm, 250 x 350cm

Border width 2.5cm

Also available made-to-measure (pages 38 & 39)

**Pile material:** 100% pure wool

**Gross pile weight:** 2000g/m<sup>2</sup>

**Backing:** Cotton



All rugs GoodWeave™ certified

Explanation page 56



**New** Left to right: Silver, Eggshell, Pewter, Mushroom, Cloudy Grey, Dusk, Night

< **New** Willingdon Night rug

[www.jacarandacarpets.com](http://www.jacarandacarpets.com)



## Willingdon broadloom

**Stock broadloom widths:** 4 & 5m

**Pile material:** 100% pure wool

**Gross pile weight:** 2000g/m<sup>2</sup>

**Backing:** Actionbac

### Broadloom specification



Explanation pages 52-55



Silver



Eggshell



Mushroom



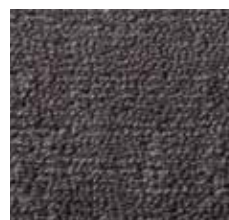
Pewter



Cloudy Grey



Dusk



Night







# OTTO

Hand-woven broadloom and rugs

## Otto rugs

**Stock rug sizes:** 120 x 180cm,  
170 x 240cm, 200 x 300cm

Also available made-to-measure (pages 38 & 39)

**Pile material:** 100% natural undyed wool

**Gross pile weight:** 3500g/m<sup>2</sup>

**Backing:** Cotton



All rugs GoodWeave™ certified

Explanation page 56



Left to right: Beige, Ivory, Natural Oatmeal, Natural Iron Grey, Natural Chocolate, Natural Charcoal

< Otto Natural Oatmeal rug

[www.jacarandacarpets.com](http://www.jacarandacarpets.com)



## Otto broadloom

**Stock broadloom widths:** 4 & 5m

**Pile material:** 100% natural undyed wool

**Gross pile weight:** 3500g/m<sup>2</sup>

**Backing:** Actionbac

### Broadloom specification



Explanation pages 52-55



Natural Iron Grey



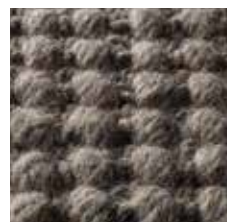
Ivory



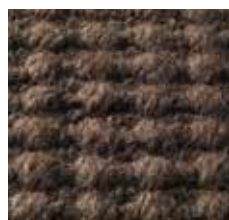
Beige



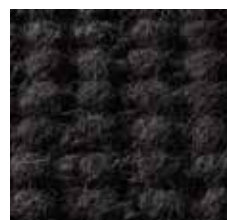
Natural Oatmeal



Natural Iron Grey



Natural Chocolate



Natural Charcoal







# ABHA

Hand-woven broadloom and rugs

## Abha rugs

**Stock rug sizes:** 120 x 180cm,  
170 x 240cm, 200 x 300cm

Also available made-to-measure (pages 38 & 39)

**Pile material:** 100% natural undyed wool

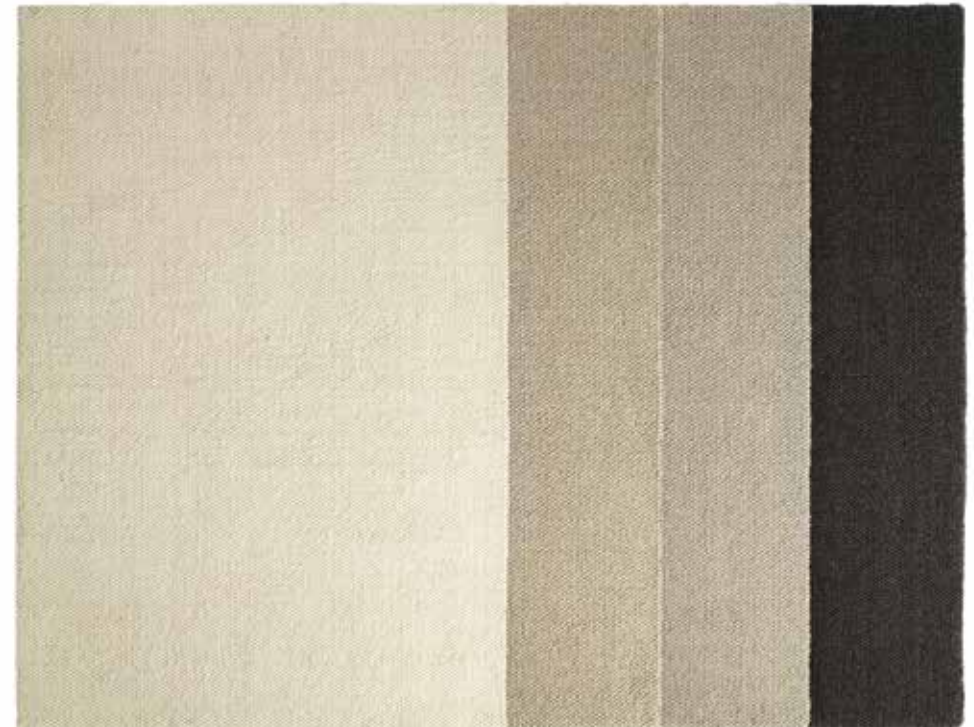
**Gross pile weight:** 3800g/m<sup>2</sup>

**Backing:** Cotton



All rugs GoodWeave™ certified

Explanation page 56



Left to right: Ivory, Natural Oatmeal, Natural Grey, Natural Charcoal

<Abha Natural Grey rug

[www.jacarandacarpets.com](http://www.jacarandacarpets.com)



## Abha broadloom

**Stock broadloom widths:** 4 & 5m

**Pile material:** 100% natural undyed wool

**Gross pile weight:** 3800g/m<sup>2</sup>

**Backing:** Actionbac

Due to its weight, Abha should be fitted by the double stick method

### Broadloom specification



Explanation pages 52-55



Natural Grey



Ivory



Natural Oatmeal



Natural Charcoal







# SAMODE & SAMBAR

Hand-woven broadloom

## Samode broadloom

**Stock broadloom widths:** 4 & 5m

Rugs made-to-measure (pages 38 & 39)

**Pile material:** 100% pure wool

**Gross pile weight:** 2300g/m<sup>2</sup>

**Backing:** Actionbac

When fitting Samode, lines may run out along seams

Broadloom specification



Explanation pages 52-55

## Sambar broadloom

**Stock broadloom widths:** 4 & 5m

Rugs made-to-measure (pages 38 & 39)

**Pile material:** 100% pure wool

**Gross pile weight:** 2500g/m<sup>2</sup>

**Backing:** Actionbac

When fitting Sambar, a light shear may be necessary along seams

Broadloom specification



Explanation pages 52-55



Samode - Taupe



Sambar - Ivory



Ivory



Silver



Silver



Pearl



Mushroom



Smoke



Mushroom



Smoke



Pearl



Granite



Taupe



Granite

<|Samode Silver broadloom

[www.jacarandacarpets.com](http://www.jacarandacarpets.com)



# HEAVY VELVET

Hand-woven broadloom

Heavy Velvet broadloom

**Stock broadloom widths:** 4 & 5m

Rugs made-to-measure (pages 38 & 39)

**Pile material:** 100% pure wool

**Gross pile weight:** 3500g/m<sup>2</sup>

**Backing:** Actionbac

When fitting Heavy Velvet, a light shear may be necessary along seams

Broadloom specification



Explanation pages 52-55



Pewter



Eggshell



Silver



Ivory



Pewter



Cloudy Grey



Dusk



Night



Atlantic Blue



Smoke



Pearl



Barley



Zinc



Natural Grey



Oatmeal



Chocolate



Dark Grey







# BILPAR

Hand-woven broadloom

Bilpar broadloom

**Stock broadloom widths:** 4 & 5m

Rugs made-to-measure (pages 38 & 39)

**Pile material:** 100% natural undyed wool

**Gross pile weight:** 2600g/m<sup>2</sup>

**Backing:** Actionbac

Broadloom specification



Explanation pages 52-55



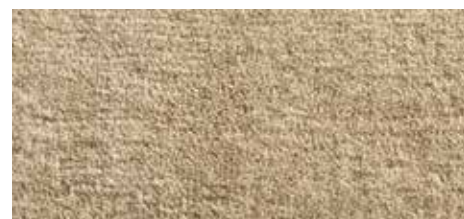
Pearl



Grey



Oatmeal



Wheat



Steel Grey









# VELVET STRIPE & KASARI VELVET

Hand-woven broadloom

## Velvet Stripe broadloom

**Stock broadloom widths:** 1, 4 & 5m

Rugs made-to-measure (pages 38 & 39)

**Pile material:** 100% natural undyed wool

**Gross pile weight:** 2500g/m<sup>2</sup>

**Backing:** Cotton

## Kasari Velvet broadloom

**Stock broadloom widths:** 4 & 5m

Rugs made-to-measure (pages 38 & 39)

**Pile material:** 100% natural undyed wool

**Gross pile weight:** 2700g/m<sup>2</sup>

**Backing:** Cotton

Broadloom specification



Explanation pages 52-55

Broadloom specification



Explanation pages 52-55



Velvet Stripe - Pewter & Ivory 37



Ivory & Grey 16



Oatmeal & Ivory 7



Kasari Velvet - Oatmeal



Oatmeal & Grey 10



Grey & Oatmeal 24



Ivory



Grey



Steel Grey & Oatmeal 19



Pewter & Grey 36



Steel Grey



Pewter



Taupe & Steel Grey 31



Charcoal & Pewter 41



Taupe



Charcoal

<Velvet Stripe Charcoal & Pewter 41 broadloom

[www.jacarandacarpets.com](http://www.jacarandacarpets.com)



# CHUNKY VELVET

Hand-woven rugs

## Chunky Velvet rugs

### Stock rug sizes:

120 x 180cm - border width 15cm

150 x 240cm - border width 20cm

200 x 250cm - border width 20cm

200 x 300cm - border width 20cm

Also available made-to-measure at source (page 38)

up to a maximum of 5m x 10m

**Pile material:** 100% pure wool

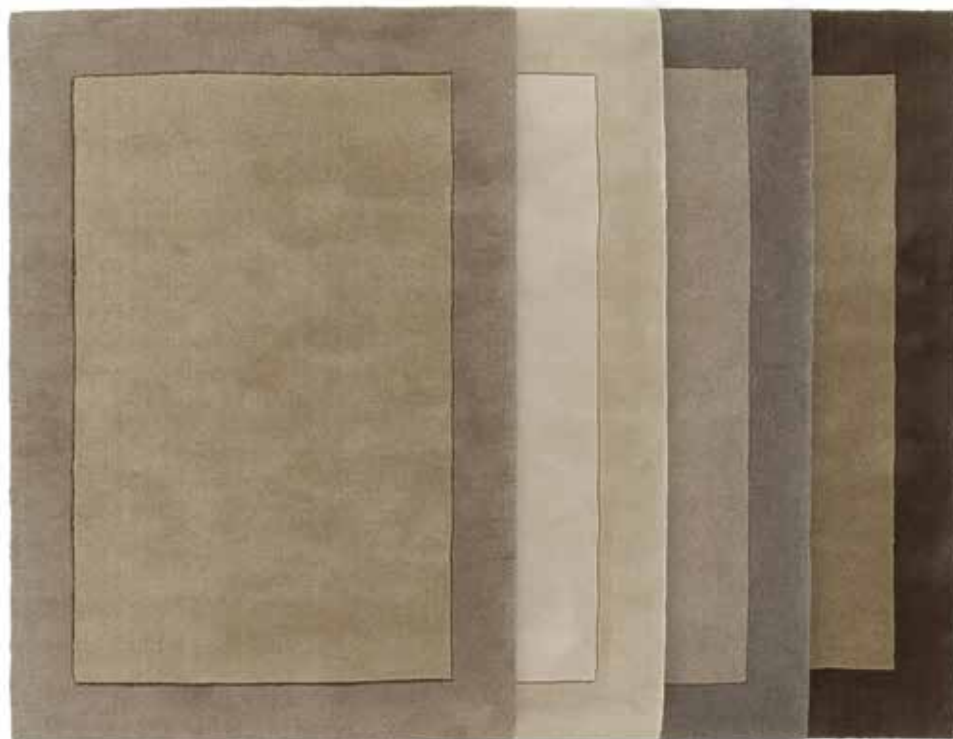
**Gross pile weight:** 4500g/m<sup>2</sup>

**Backing:** Cotton



All rugs GoodWeave™ certified

Explanation page 56



Left to right: Natural Grey, Ivory, Stone, Taupe

Tel: +44 (0)1536 762 697

Chunky Velvet Stone rug >







# LUSTRE

Hand-woven rugs

## Lustre rugs

**Stock rug sizes:** 120 x 180cm, 150 x 240cm

200 x 250cm, 200 x 300cm

Also available made-to-measure at source (page 38)

**Pile material:** 60% wool 40% polyester

**Gross pile weight:** 3200g/m<sup>2</sup>

**Backing:** Cotton



All rugs GoodWeave™ certified

Explanation page 56



Left to right: Ivory, Zinc, Silver, Graphite, Black

<Lustre Silver rug

[www.jacarandacarpets.com](http://www.jacarandacarpets.com)



# PEBBLES

Hand-woven rugs

## Pebbles rugs

**Stock rug sizes:** 120 x 180cm, 150 x 240cm

200 x 250cm, 200 x 300cm

Also available made-to-measure at source (page 38)

up to a maximum of 3.6 x 7m

Circular rugs not possible in this design

**Pile material:** 100% pure wool

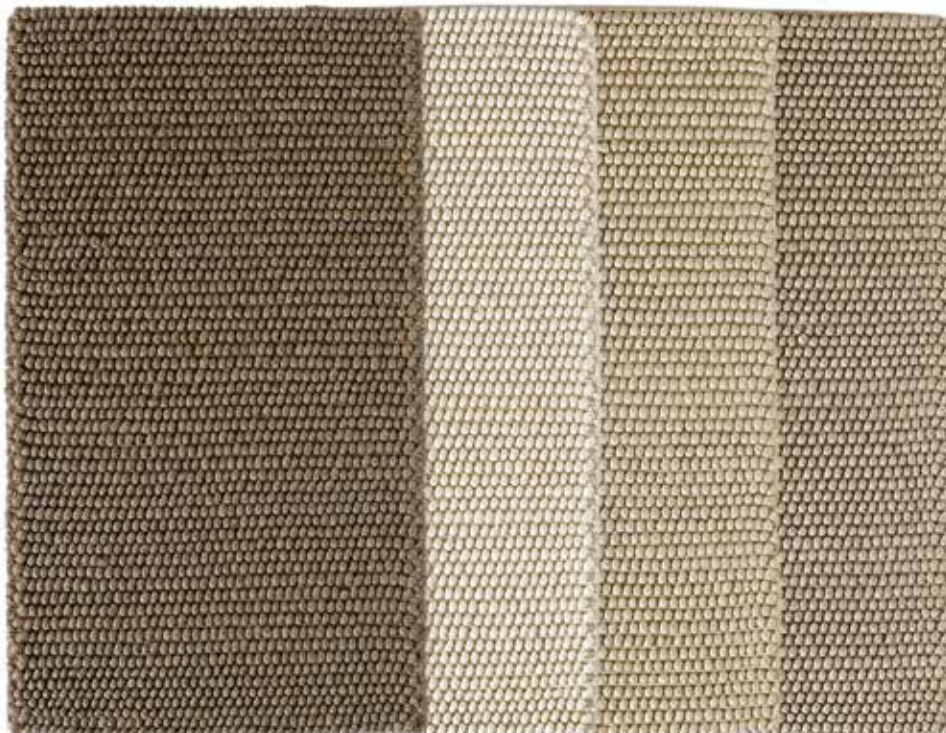
**Gross pile weight:** 5500g/m<sup>2</sup>

**Backing:** Cotton



All rugs GoodWeave™ certified

Explanation page 56



Left to right: Taupe, Ivory, Oatmeal, Barley

Tel: +44 (0)1536 762 697

Pebbles Barley rug >





# BESPOKE RUGS

Rugs | Made-to-measure at source



Jacaranda offers 2 ways to have your chosen hand-woven rugs made-to-measure. They can be manufactured at source as shown here, or made-to-measure from UK broadloom stock, see opposite.

Your choice has implications for the:

- Textures you can choose
- Edging or borders available
- Backing of your rug
- Delivery lead time
- And lastly price.

You should choose to have your **bespoke rug hand-woven at source** if you want to recreate any of the hand woven textures from pages 3-37 to your own dimensions.



Chatapur Zinc rug, produced at source with hand-sewn edge

Rugs made from textures within the machine made section (pages 45-51) can be made only from UK broadloom stock, see next page.

You can ask us to create rugs with borders or simple designs, by combining different colours within the same range. Jacaranda can weave a bespoke rug from 2 or more colours of Heavy Velvet for example (page 31). Several textures can be woven into circular or oval rugs. All are supplied with a cotton secondary backing, and hand-sewn edges as pictured on this page.

They take 12 weeks to produce on average and are priced per m<sup>2</sup> in our price list.



Chunky Velvet Ivory rug, produced at source with hand-sewn edge



Willington Cloudy Grey rug, produced at source with hand-sewn edge and cotton backing



# BESPOKE RUGS

Rugs | Made-to-measure from UK broadloom stock

You should order your rugs made-to-measure from UK broadloom stock if:



△ Natural Weave Hexagon bordered in Black Linen

- You would like to choose from Jacaranda's leather, suede, cotton and linen border collection
- You would like it blind hemmed or whipped
- Timing is tight
- You have chosen a texture from the machine made broadloom collection (pages 45-51).

You can choose any broadloom texture. You then choose your 'edging' from Jacaranda's selection of cotton, linen, leather or suede borders, pictured on our website [www.jacarandacarpets.com](http://www.jacarandacarpets.com)

Alternatively you can ask Jacaranda to blind hem in tape, colour matched to the carpet pile, all broadlooms except Abha, Otto, Natural Weave, Mavora and Milford. We can whip all our carpets except Abha, Agra, Otto and Mavora. Viscose or TENCEL® are better blind hemmed than whipped as no wool edge can perfectly match the viscose pile. Rugs can be circular, oval or rectangular. The backing on your rug may be cotton or Actionbac depending on the construction of the broadloom you have chosen.

Jacaranda uses real leather and suede to border rugs, so splices to join hides are unavoidable. If you require splice free borders, please choose linen or cotton, or ask us to colour match 'faux' leather.

Delivery of these rugs is normally within 5 weeks. Jacaranda will cost these rugs at time of order, based on the following calculation.

The **bordering cost** is added to the **rug centre cost** where:

- The **bordering cost** is calculated by multiplying the linear metre price for bordering, by the length of the rug perimeter
- The **rug centre cost** is calculated by multiplying the broadloom cut length price, by the broadloom roll width, by your rug length or width (depending on the most economical way to cut it from the broadloom roll).



Simla Oatmeal with blind hemmed edge Tape colour matched to pile



Seville Wilton Velvet Oatmeal with whipped edge Yarn colour matched to pile

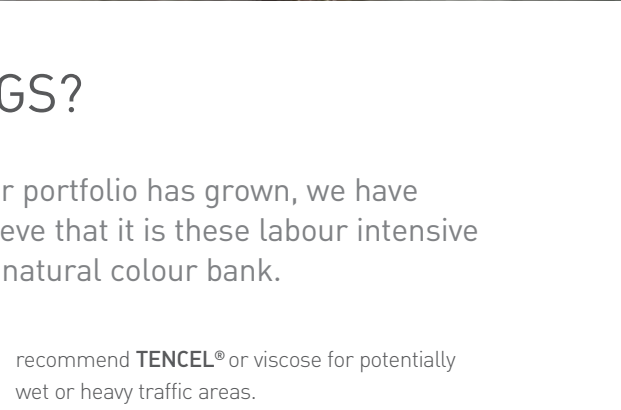
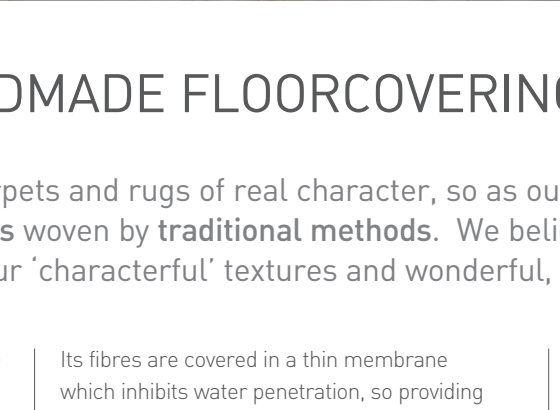
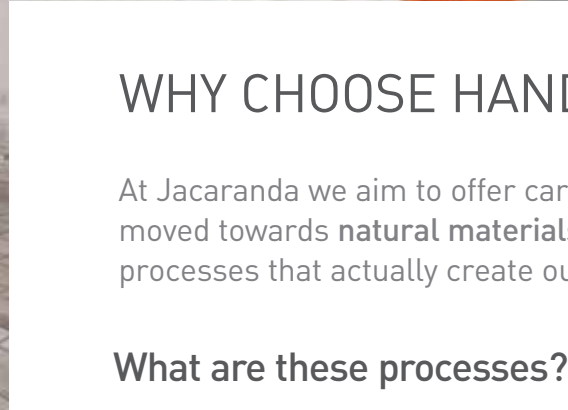


Rampur Eggshell with Suede Doeskin border



Sambar Taupe with double border in Linen Salt & Mushroom





## WHY CHOOSE HANDMADE FLOORCOVERINGS?

At Jacaranda we aim to offer carpets and rugs of real character, so as our portfolio has grown, we have moved towards **natural materials** woven by **traditional methods**. We believe that it is these labour intensive processes that actually create our 'characterful' textures and wonderful, natural colour bank.

### What are these processes?

All the floorcoverings within the **hand-woven** section of this brochure are created on traditional wooden looms. Their creation involves large numbers of highly skilled artisans and rigorous quality control, as the pictures here demonstrate.

### Why natural fibres?

We believe that **pure wool** still makes the best carpets. The elasticity of good quality wool gives excellent resilience and wear properties.

Its fibres are covered in a thin membrane which inhibits water penetration, so providing natural stain resistance. Wool is naturally flame retardant. It holds less 'static' than most synthetic yarns so does not attract dust, or promote the growth of dust mites or bacteria.

At a fraction of the price of silk, we also weave **TENCEL®** into some ranges. A natural fibre spun from cellulose, **TENCEL®** gives a beautiful, lustrous, silk-like sheen. It is harder wearing and more stain resistant than traditional viscose, and can be professionally cleaned with care, but is still not as tough as wool. We do not

recommend **TENCEL®** or viscose for potentially wet or heavy traffic areas.

At Jacaranda we often receive compliments such as "we love the naturalness of your colours" or "you have just the right tones". In great part this is due to our **natural, undyed wool** products. We are able to offer such a wide range of 'undyed' colours by sourcing different wools from around the world.







## Please check that handmade floorcoverings are right for you or your client

We choose to use labour intensive processes and natural fibres to reduce the environmental impact of our carpet production. We believe also, that they are responsible for our 'characterful' textures and beautiful, natural colours. We love the slight quirkiness that can only be handmade.

However these handmade characteristics so highly valued by many, do not appeal to all. Hand-weaving and hand-knotting cannot and do not set out to mirror the uniformity of 'machine made' carpet. Those wanting a perfectly uniform finish should consider something machine woven from Jacaranda's **machine made** section on pages 45-51.

At Jacaranda we take quality control very seriously, and each roll and rug is checked

and rechecked to make sure that it falls within industry tolerances. However slight variations in colour, weave and pile weight are inevitable and part of their 'handmade' character rather than faults. Natural fibres may fade over time, especially if exposed to strong light.

### From yarn to carpet

- 1 Yarn arrives at the factory in hanks
- 2 Woollen weft is transferred from hanks to bobbins
- 3 Cotton warp is prepared for the loom
- 4 Carpets are woven on traditional wooden looms 4 or 5m wide
- 5 Each loom is worked manually by 3 to 4 strong operatives
- 6 Without the help of electricity
- 7 Using a traditional wooden shuttle
- 8 Loops are woven over metal rods
- 9 Which are hand cut to create the pile
- 10 Here a smaller loom is used
- 11 To weave felted yarn into a 'Pebbles' rug

- 12 Carpets and rugs are stretched onto grippers and backed with latex
- 13 Actionbac is applied to the damp latex for structural stability
- 14 Newly backed carpets used to be dried in the sun, but now huge ovens provide constant drying temperatures all year round
- 15 Handwoven rugs receive a secondary cotton backing then are hand sewn round edges
- 16 Every rug and roll is checked, any tufts snipped or tiny imperfections repaired
- 17 Velvets are sheared. This is why rolls can vary in pile height and a light shear is sometimes necessary along seams
- 18 No carpet leaves the factory before a final check and a signature to its backing by Jacaranda's quality controller
- 19 It's then rolled
- 20 And wrapped for its journey west.







HIMALAYAN HAND-KNOTTED RUGS



# HIMALAYAN

Hand-knotted rugs | From stock and bespoke



Jacaranda's Himalayan rugs are works of art, each hand-knotted by craftsmen and completely individual.

Our weavers use traditional Tibetan rug-making techniques brought by their parents and grandparents over the Himalayas from Tibet. The weavers sit in rows at fixed looms, one or two weavers for a small rug, up to five for the largest. Each weaver works the area in front of them, making individual knots over metal rods, which are cut to create the pile. The weavers count knots as they go, following by eye, a design from the CAD drawing fixed to the loom above them. It is highly skilled work. They must each knot uniformly at the same speed (that of the slowest), so their rugs grow on average by just 10cm per day.



Jacaranda's Himalayan hand-knotted rugs are knotted by hand in Kathmandu, Nepal.

## Laborious it may be, but Tibetan hand-knotting has important advantages:

- **Quality.** This is a traditional technique that creates rugs with the structure and density to withstand many years of use. The weavers knot with Chinese silk. Also with New Zealand wool and with hand-carded wool from the high plateaux of Tibet, renowned for its long, strong fibres and naturally high lanolin content which increases the lustre of these rugs with wear
- **Intricacy.** Many of Jacaranda's Himalayan rug designs are very simple by choice, but hand-knotting lends itself to complex designs
- **Flexibility.** You can buy a rug from stock. Jacaranda can make your designs, or re-create Jacaranda's designs to your colour scheme and dimensions. We can colour match to fabrics, wall papers, paints, pantones or poms
- **Individuality.** At Jacaranda we value the irregularity and slight quirkiness that can only be handmade. Unlike machine made, mass produced rugs, each Jacaranda Himalayan hand-knotted rug will have its own character and charm. If we make your design, you will own a work of art that is truly unique.

## Choices, there are several to be made:

- **Design.** Yours, one of Jacaranda's stock rug designs, or a mixture of the two
- **Colours.** These can be taken from Jacaranda's designs or colour matched to materials supplied by you. Alternatively you can visit Jacaranda's head office or London showroom to choose from our Chromatone pom sets containing over 1500 colours
- **Knot count.** 60 knots per square inch gives a luxurious, chunky look. 100 knots per square inch is finer and allows more detail in the design. 120 knots per square inch is possible too
- **Yarn.** The luminosity and shine of pure Chinese silk versus the comfort and warmth of wool. Jacaranda also weaves from wool/silk blended yarns which give a silky sheen at lower prices than pure silk
- **High/low or sheared flush.** Designs often incorporate pure silk motifs against wool backgrounds. These silk sections can be sheared flush to the background or left standing proud
- **Size and shape.** Jacaranda stocks several designs at 200 x 300cm and 250 x 350cm. When these are ordered bespoke at other sizes, design elements may be duplicated, or scaled up or down, dependent on the design or customer preference
- **Timing.** To perfect customer colours and designs takes time, with CAD's, poms and strike-offs sent from Nepal for approval. Please assume 6 weeks to agree all details, and a further 18 weeks for production. Large rugs can take longer.

For all stocked designs visit - [www.jacarandacarpets.com/himalayan-hand-knotted-rugs.html](http://www.jacarandacarpets.com/himalayan-hand-knotted-rugs.html)



**New Himalayan JC2004 Kulu Grey**  
From stock and bespoke



**New Himalayan JC2009 Sea Wheat Teal Blue**  
From stock and bespoke



**New Himalayan JC2007 Moon Leaf Silver**  
From stock and bespoke





## TRADITIONAL TECHNIQUES TAKE TIME TO CRAFT BEAUTIFUL, INDIVIDUAL, HIGH QUALITY, LONG-LIVED RUGS

- 1 Jacaranda prefers to use hand-carded wool from the high plateau of Tibet, renowned for its naturally high lanolin content and long strong fibres
- 2 Here hand-carded Tibetan wool is spun into yarn
- 3 Yarns are dyed in small lots in traditional vats
- 4 Using Swiss dyes, measured out by hand
- 5 Matched to colours chosen by Jacaranda or our customers
- 6 Computer aided design is used to formalise and agree design details. The design is printed on a graph where each square represents 1 knot. Colours are painted in by hand
- 7 The weavers work on a fixed vertical loom. They follow by eye the graph above them, making every knot individually by hand around metal rods
- 8 Lines of knots are eased into place with a hammer, then cut to release the rod and reveal the pile
- 9 Vigorous washing conditions the yarn, as well as setting the colours and rug size
- 10 Rugs are dried in the sun on bamboo slats
- 11 Edges are hand-sewn in yarn matched to the pile
- 12 All Jacaranda's Himalayan rugs are subjected to a thorough and detailed quality inspection before their journey west.







MACHINE MADE CARPETS





# MAYFIELD

Machine made broadloom

Mayfield broadloom

**Stock broadloom width:** 4m

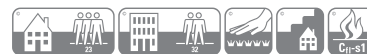
Rugs made-to-measure (page 39)

**Pile material:** 100% New Zealand wool

**Gross pile weight:** 2543g/m<sup>2</sup>

**Backing:** Pure jute

Broadloom specification



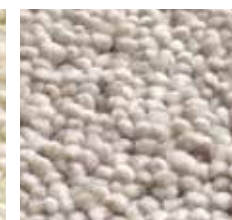
Explanation pages 52-55



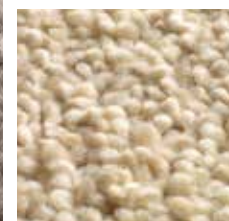
New Grey



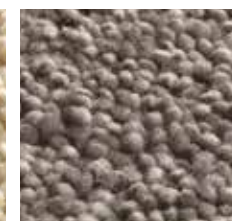
New Ivory



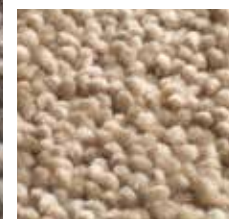
New Silver



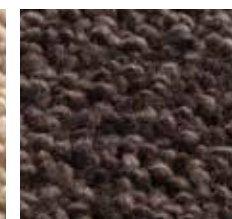
New Buttermilk



New Grey



New Clay



New Ebony

<New Mayfield Silver broadloom

Page 45: New Mavora Pumice broadloom



# MAVORA

Machine made broadloom

Mavora broadloom

**Stock broadloom width:** 4m

Rugs made-to-measure (page 39)

**Pile material:** 100% New Zealand wool

**Gross pile weight:** 2035g/m<sup>2</sup>

**Backing:** Pure jute

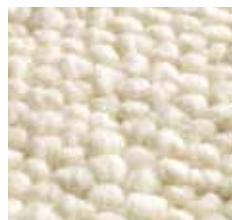
Broadloom specification



Explanation pages 52-55



New Kaolin



New Chalk



New Kaolin



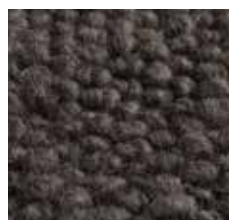
New Oatmeal



New Pumice



New Taupe



New Cinder

Tel: +44 (0)1536 762 697

New Mavora Pumice broadloom >







# MILFORD

Machine made broadloom

Milford broadloom

**Stock broadloom width:** 4m

Rugs made-to-measure (page 39)

**Pile material:** 100% New Zealand wool

**Gross pile weight:** 1530g/m<sup>2</sup>

**Backing:** Pure jute

Broadloom specification



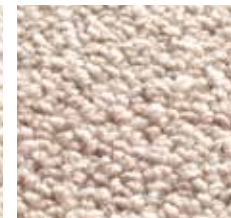
Explanation pages 52-55



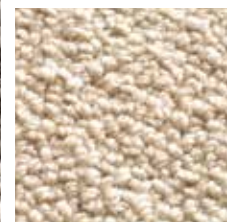
New Pewter



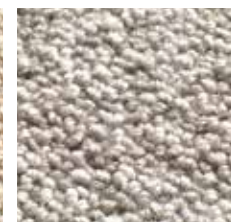
New Alabaster



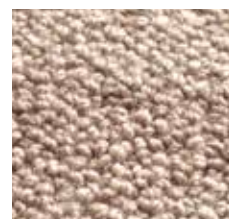
New Beeswax



New Buttermilk



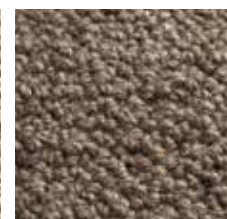
New Silver



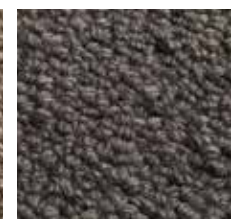
New Pumice



New Marl



New Otter



New Night

<New Milford Beeswax broadloom

[www.jacarandacarpets.com](http://www.jacarandacarpets.com)



# MIDHURST

Machine made broadloom

## Midhurst broadloom

**Stock broadloom width:** 4m

Rugs made-to-measure (page 39)

**Pile material:** 100% New Zealand wool

**Gross pile weight:** 1360g/m<sup>2</sup>

**Backing:** Pure jute

## Broadloom specification



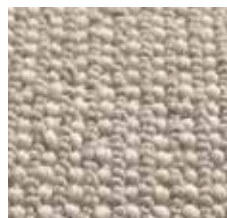
Explanation pages 52-55



New Granite



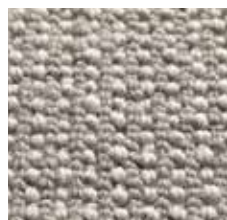
New Muscovite



New Granite



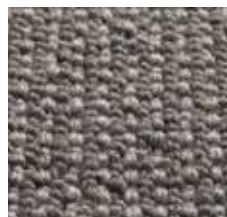
New Pepper



New Shale



New Rocksalt



New Slate

Tel: +44 (0)1536 762 697

New Midhurst Rocksalt broadloom >







# SEVILLE & SALAMANCA

Machine made broadloom

## Seville Wilton Velvet broadloom

**Stock broadloom width:** 4m

Rugs made-to-measure (page 39)

**Pile material:** 100% pure wool

**Gross pile weight:** 1410g/m<sup>2</sup>

## Salamanca Wilton broadloom

**Stock broadloom width:** 4m

Rugs made-to-measure (page 39)

**Pile material:** 100% pure wool

**Gross pile weight:** 1410g/m<sup>2</sup>

Broadloom specification

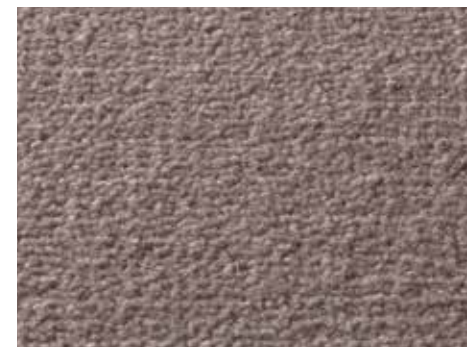


Explanation pages 52-55

Broadloom specification



Explanation pages 52-55



Seville Wilton - Barley



Salamanca Wilton - Wheat



Ivory



Pearl



Ivory



Pearl



Wheat



Oatmeal



Barley



Oatmeal



Taupe



Graphite



Taupe



Graphite

<|Salamanca Wilton Ivory broadloom

[www.jacarandacarpets.com](http://www.jacarandacarpets.com)



# NATURAL WEAVE

Machine made broadloom

## Natural Weave Square broadloom

**Stock broadloom width:** 4m  
Rugs made-to-measure (page 39)  
**Pile material:** 100% New Zealand wool  
**Gross pile weight:** 1650g/m<sup>2</sup>  
**Backing:** Pure jute

Broadloom specification



Explanation pages 52-55



Natural Weave Square - Grey



Ivory



Oatmeal



Pearl



Wheat



Taupe

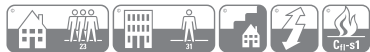


Charcoal

## Natural Weave Hexagon broadloom

**Stock broadloom width:** 4m  
Rugs made-to-measure (page 39)  
**Pile material:** 100% New Zealand wool  
**Gross pile weight:** 1275g/m<sup>2</sup>  
**Backing:** Pure jute

Broadloom specification



Explanation pages 52-55



Natural Weave Hexagon - Pearl



Ivory



Oatmeal



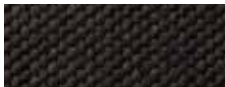
Wheat



Grey



Taupe



Charcoal





BROADLOOM SPECIFICATION TABLE	Icons Full explanation on pages 54-55	Page no	Stock broadloom widths:	Stock rug sizes: All rugs made-to-measure	Construction	Pile material	Backing	Gross pile weight
ABHA		29	4 & 5m	120 x 180cm, 170 x 240cm, 200 x 300cm	Hand-woven	100% natural undyed wool	Actionbac	3800g/m <sup>2</sup>
AGRA		17	4 & 5m	120 x 180cm, 170 x 240cm, 200 x 250cm 200 x 300cm, 250 x 350cm	Hand-woven	50% TENCEL® 50% wool	Actionbac	5000g/m <sup>2</sup>
BILPAR		32	4 & 5m	Rugs made-to-measure only	Hand-woven	100% natural undyed wool	Actionbac	2600g/m <sup>2</sup>
CHAMBA		33	4 & 5m	Rugs made-to-measure only	Hand-woven	100% natural undyed wool	Actionbac	2200g/m <sup>2</sup>
CHANDIGARH		33	4 & 5m	Rugs made-to-measure only	Hand-woven	100% natural undyed wool	Actionbac	3000g/m <sup>2</sup>
CHATAPUR		13	4 & 5m	120 x 180cm, 170 x 240cm, 200 x 250cm 200 x 300cm, 250 x 350cm	Hand-woven	100% viscose	Cotton	3700g/m <sup>2</sup>
HEAVY VELVET		31	4 & 5m	Rugs made-to-measure only	Hand-woven	100% pure wool	Actionbac	3500g/m <sup>2</sup>
KASARI VELVET		34	4 & 5m	Rugs made-to-measure only	Hand-woven	100% natural undyed wool	Cotton	2700g/m <sup>2</sup>
MAYFIELD		46	4m	Rugs made-to-measure only	Machine tufted	100% New Zealand wool	Pure jute	2543g/m <sup>2</sup>
MAVORA		47	4m	Rugs made-to-measure only	Machine tufted	100% New Zealand wool	Pure jute	2035g/m <sup>2</sup>
MIDHURST		49	4m	Rugs made-to-measure only	Machine tufted	100% New Zealand wool	Pure jute	1360g/m <sup>2</sup>
MILFORD		48	4m	Rugs made-to-measure only	Machine tufted	100% New Zealand wool	Pure jute	1530g/m <sup>2</sup>
NATURAL WEAVE HEXAGON		51	4m	Rugs made-to-measure only	Machine woven	100% New Zealand wool	Pure jute	1275g/m <sup>2</sup>
NATURAL WEAVE SQUARE		51	4m	Rugs made-to-measure only	Machine woven	100% New Zealand wool	Pure jute	1650g/m <sup>2</sup>
OTTO		27	4 & 5m	120 x 180cm, 170 x 240cm, 200 x 300cm	Hand-woven	100% natural undyed wool	Actionbac	3500g/m <sup>2</sup>
RAJGARH		19	4 & 5m	Rajgarh Bordered: 200 x 250cm, 250 x 350cm, 300 x 400cm	Hand-woven	60% viscose 40% wool	Actionbac	3200g/m <sup>2</sup>
RAMPUR		21	4 & 5m	Rugs made-to-measure only	Hand-woven	60% viscose 40% wool	Actionbac	2200g/m <sup>2</sup>



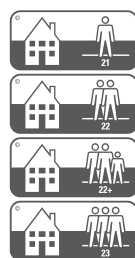
Carpet thickness approx	Stripe direction	Use classification	Comfort rating EN 1307	Stairs suitability EN 1963	Tog rating	Static electric charge ISO 6356	Colourfastness to:					Burning behaviour
							Light ISO 105 B02	Rubbing dry	Rubbing wet	Water ISO 105 E01	Water stains	
								ISO 105 X12				
17mm		EN 1307 Class 33 Heavy contract	Class 5	No	Not tested	Anti-static	6-7	4-5	3-4	4	ISO 105 E01 4-5	BS EN 13501-1:2002 Class Bfl-s1
24mm		EN 1307 Class 32 General Contract	Class 5	No	3.22	Anti-static	6	5	5	4-5	BS EN 15115 4	BS EN 13501-1:2002 Class Efl
13mm		EN 1307 Class 23/31 Heavy domestic, moderate contract	Class 5	Domestic use	2.66	Anti-static	4-5	4-5	4-5	4	BS EN 15115 4	BS EN 13501-1:2002 Class Cfl-s1
12mm	Across roll	EN 1307 Class 23/33 Heavy domestic, heavy contract	Class 5	No	2.33	Anti-static	5-6	5	4-5	4-5	BS EN 15115 5	BS EN 13501-1:2002 Class Cfl-s1
14mm		EN 1307 Class 23/33 Heavy domestic, heavy contract	Class 5	No	2.62	Anti-static	6	5	4-5	4-5	BS EN 15115 3-4	BS EN 13501-1:2002 Class Bfl-s1
11mm	Across roll	EN 1307 Class 23/31 Heavy domestic, moderate contract	Class 5	No	1.01	Anti-static	5	4-5	4-5	3	BS EN 15115 2	BS EN 13501-1:2002 Class Efl
15mm		EN 1307 Class 33 Heavy contract	Class 5	Domestic use	Not tested	Anti-static	4	4-5	4-5	3-4	ISO 105 E01 5	BS EN 13501-1:2002 Class Cfl-s1
15mm		EN 1307 Class 23/32 Heavy domestic, general contract	Class 5	Domestic use	Not tested	Anti-static	6	4-5	4	3-4	EN 1307/G 4-5	BS EN 13501-1:2002 Class Cfl-s1
16.9mm		EN 1307 Class 23/32 Heavy domestic, general contract	Class 5	Domestic use	2.77		6	5	5	5	BS EN 15115 5	BS EN 13501-1:2002 Class Cfl-s1
12.8mm		EN 1307 Class 23/32 Heavy domestic, general contract	Class 5	No	3.12		6	5	5	5	BS EN 15115 5	BS EN 13501-1:2002 Class Dfl-s1
8.5mm	Along roll	EN 1307 Class 33 Heavy contract	Class 5	No	1.41		6	4-5	4-5	4-5	BS EN 15115 5	BS EN 13501-1:2002 Class Cfl-s1
11.4mm		EN 1307 Class 33 Heavy contract	Class 5	Intensive use	1.84		6	4-5	4-5	4-5	BS EN 15115 5	BS EN 13501-1:2002 Class Cfl-s1
9mm		EN 1307 Class 23/31 Heavy domestic, moderate contract		Domestic use	1.16	Anti-static at 25% RH	6	4-5	4-5	4	EN 1307/G 4-5	EN 13501:2007 Class Cfl-s1
9mm		EN 1307 Class 23/32 Heavy domestic, general contract		Domestic use	0.86	Anti-static at 25% RH	6	4-5	4-5	4	EN 1307/G 4-5	EN 13501:2007 Class Bfl-s1
17mm		EN 1307 Class 33 Heavy contract	Class 5	No	Not tested	Anti-static	6-7	4-5	4-5	2-3	ISO 105 E01 4-5	BS EN 13501-1:2002 Class Bfl-s1
13mm		EN 1307 Class 23/32 Heavy domestic, general contract	Class 5	Domestic use	Not tested	Anti-static	4-5	4-5	4	3	EN 15115 2	BS EN 13501-1:2002 Class Efl
12mm	Across roll	EN 1307 Class 23/32 Heavy domestic, general contract	Class 5	Domestic use	1.95	Anti-static	6	4-5	4	3	ISO 105 E01 3-4	BS EN 13501-1:2002 Class Efl



BROADLOOM SPECIFICATION TABLE	Icons Full explanation below	Page no	Stock broadloom widths:	Stock rug sizes: All rugs made-to-measure	Construction	Pile material	Backing	Gross pile weight
RANILA	     	20	4 & 5m	Rugs made-to-measure only	Hand-woven	60% viscose 40% wool	Actionbac	2200g/m <sup>2</sup>
SALAMANCA WILTON	    	50	4m	Rugs made-to-measure only	Wilton weave	100% pure wool	N/A	1410g/m <sup>2</sup>
SAMBAR	    	30	4 & 5m	Rugs made-to-measure only	Hand-woven	100% pure wool	Actionbac	2500g/m <sup>2</sup>
SAMODE	    	30	4 & 5m	Rugs made-to-measure only	Hand-woven	100% pure wool	Actionbac	2300g/m <sup>2</sup>
SANTUSHTI	     	11	4 & 5m	170 x 240cm, 200 x 250cm 200 x 300cm, 250 x 350cm	Hand-woven	100% TENCEL®	Cotton	3000g/m <sup>2</sup>
SATPURA STRIPE	    	23	4 & 5m	120 x 180cm, 170 x 240cm, 200 x 250cm 200 x 300cm, 250 x 350cm	Hand-woven	75% wool 25% viscose	Actionbac	3500g/m <sup>2</sup>
SEVILLE WILTON VELVET	    	50	4m	Rugs made-to-measure only	Wilton weave	100% pure wool	N/A	1410g/m <sup>2</sup>
SIKKIM	     	5	4 & 5m	120 x 180cm, 170 x 240cm, 200 x 250cm 200 x 300cm, 250 x 350cm	Hand-woven	100% TENCEL®	Cotton	3250g/m <sup>2</sup>
SIMLA	    	7	4 & 5m	Simla & Simla Stripe: 120 x 180cm, 170 x 240cm, 200 x 250cm, 200 x 300cm, 250 x 350cm Simla Bordered: 200 x 250cm, 250 x 350cm, 300 x 400cm	Hand-woven	100% TENCEL®	Cotton	4000g/m <sup>2</sup>
UDAIPUR	     	15	4m	120 x 180cm, 170 x 240cm, 200 x 250cm 200 x 300cm, 250 x 350cm	Hand-woven	100% viscose	Cotton	3700g/m <sup>2</sup>
VELVET STRIPE	    	34	1, 4 & 5m	Rugs made-to-measure only	Hand-woven	100% natural undyed wool	Cotton	2500g/m <sup>2</sup>
WILLINGDON	    	25	4 & 5m	170 x 240cm, 200 x 250cm 200 x 300cm, 250 x 350cm	Hand-woven	100% pure wool	Actionbac	2000g/m <sup>2</sup>

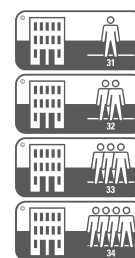
Jacaranda uses Floor Covering Standard Symbols (FCSS) throughout this table, our brochure and product labelling. This is a standardised system of graphic symbols developed to make the classification of specific characteristics easily understandable and recognisable. We have included a brief description here.

#### DOMESTIC - for residential use



- Class 21 - light**  
Areas with low or intermittent use
- Class 22 - general/medium**  
Areas with medium use
- Class 22+ - general**  
Areas with medium to heavy use
- Class 23 - heavy**  
Areas with heavy use

#### COMMERCIAL - for public and commercial use e.g. hotel bedrooms, small offices.



- Class 31 - moderate**  
Areas with low or intermittent use
- Class 32 - general**  
Areas with medium traffic
- Class 33 - heavy**  
Areas with heavy traffic
- Class 34 - very heavy**  
Areas with intense use



**LUXURY**  
Results vary from 1 tuft, up to 5 tufts for the most luxurious carpets



**STAIRS**  
Recommended for all stairs



Suitable for stairs in domestic buildings only



Do not install on stairs



Carpet thickness approx	Stripe direction	Use classification	Comfort rating EN 1307	Stairs suitability EN 1963	Tog rating	Static electric charge ISO 6356	Colourfastness to:					Burning behaviour
							Light ISO 105 B02	Rubbing dry	Rubbing wet	Water ISO 105 E01	Water stains	
								ISO 105 X12				
12mm	Across roll	EN 1307 Class 23/32 Heavy domestic, general contract	Class 5	Domestic use	1.95	Anti-static	6	4-5	4	3	ISO 105 E01 3-4	BS EN 13501-1:2002 Class Efl
9mm		EN 1307 Class 33 Heavy contract	Class 4	Domestic use	1.91	Anti-static	5	4-5	4-5	4-5	BS EN 15115 5	BS EN 13501-1:2002 Class Bfl-s1
13mm		EN 1307 Class 32 General contract	Class 5	Domestic use	2.67	Anti-static	6	4-5	4-5	4-5	EN 15115 4-5	BS EN 13501-1:2002 Class Cfl-s1
12mm	Across roll	EN 1307 Class 32 General contract	Class 5	Domestic use	2.44	Anti-static	6	4-5	4-5	4-5	EN 15115 4-5	BS EN 13501-1:2002 Class Cfl-s1
10mm	Across roll	EN 1307 Class 23/32 Heavy domestic, general contract	Class 5	Domestic use	0.72	Anti-static	6	5	5	5	BS EN 15115 4	BS EN 13501-1:2002 Class Efl
17mm	Along roll	EN 1307 Class 22+/31 General domestic, moderate contract	Class 5	Domestic use	Not tested	Anti-static	5	5	4-5	5	EN1307/EN15115 2-3	EN 13501:2007 Class Dfl-s1
9mm		EN 1307 Class 33 Heavy contract	Class 4	Domestic use	1.33	Anti-static	4	4-5	4-5	4-5	BS EN 15115 4-5	BS EN 13501-1:2002 Class Bfl-s1
10mm	Across roll	EN 1307 Class 23/31 Heavy domestic, moderate contract	Class 5	Domestic use	0.71	Anti-static	6	4-5	4-5	4-5	BS EN 15115 4	BS EN 13501-1:2002 Class Efl
11mm		EN 1307 Class 22 General domestic	Class 5	No	0.82	Anti-static	6	5	4-5	4	BS EN 15115 4	BS EN 13501-1:2002 Class Efl
11mm	Across roll	EN 1307 Class 23/31 Heavy domestic, moderate contract	Class 5	No	1.01	Anti-static	5	4-5	4-5	3	BS EN 15115 2	BS EN 13501-1:2002 Class Efl
14mm	Along roll	EN 1307 Class 22+ General domestic	Class 5	Domestic use	Not tested	Anti-static	5	4-5	4-5	4-5	EN 15115 4-5	BS EN 13501-1:2002 Class Cfl-s1
10mm	Across roll	EN 1307 Class 33 Heavy contract	Class 5	Intensive use	1.40	Anti-static	6	5	5	5	BS EN 15115 5	BS EN 13501-1:2002 Class Cfl-s1



#### CASTOR CHAIR RATING

Castor chairs cause extreme stress and heavy wear to carpets. This symbol indicates carpets in a domestic location which are suitable for castor chair use. Jacaranda recommends the use of castor chair mats over carpet.



#### ANTISTATIC

This icon is used if the measured body voltage is lower than 2kV after walking.



#### BURNING BEHAVIOUR

The requirements for fire behaviour for building products are strictly regulated. Fire categories for textiles vary from F up to B. Classes C<sub>fl</sub> and B<sub>fl</sub> are often required for public or commercial buildings but rules vary between countries and should always be checked by the specifier. Classes D to B are subdivided with smoke density for S<sub>1</sub> lower than for S<sub>2</sub>.

#### COLOURFASTNESS

Carpets are tested for colourfastness to light, rubbing and water. For light tests, results can vary from 8 for no change to 1 for severe fading. For rubbing and water tests, 5 represents no change, down to 1 for severe change.

#### TOG

This is a measure of thermal resistance and is used as an indication of suitability for use over underfloor heating, see explanation on page 56.

All test values and icons result from tests carried out to British or European safety standards, commissioned by Jacaranda from independent, accredited testing houses.

All Jacaranda's broadlooms carry the CE mark, and Declaration of Performance documents (DOP's) are available for download from our website [www.jacarandacarpets.com](http://www.jacarandacarpets.com).



# CHOOSING AND ORDERING

Jacaranda supplies broadloom carpets, rugs and runners to retailers and interior designers. If you are a trade customer please contact our office at the address on the back cover, for orders and quotes. If you are a consumer do please make contact too, as we can put you in touch with one of our trade customers in your local area.

## When choosing your carpet or rug, please consider:

### Use classification and icons

The icons throughout this brochure give important information as to recommended usage for each broadloom range. For an explanation of these icons please see pages 52-55.

### GoodWeave Rug Certification

Founded in 1995, GoodWeave works to stop child labour in the handmade rug industry. The international organisation promotes child-labour-free supply chains via its unique labelling scheme, which includes independent and random producer inspections, monitoring and certification. GoodWeave likewise provides educational opportunities to children in weaving communities and works to ensure the fair treatment of adult carpet weavers. The GoodWeave label on a rug is the best assurance that no child labour was used in its production. [www.goodweave.org](http://www.goodweave.org).

### Seams

Please consider the position of any seams, especially when ordering hand-woven broadloom. It may not always be possible to perfectly align the lines in cut & loop hand-woven broadlooms. A light shear may be necessary along seams on hand-woven velvets. For wide rooms, seams can be avoided by choosing one of the hand-woven textures stocked in 5m width.

### Pets and pulled loops

Cats and dogs can 'pull' loops in loop-pile or cut & loop carpets. Owners of very 'active' pets could consider one of Jacaranda's cut-pile designs instead.

### Fading

Natural fibres will fade over time and this may be accelerated by exposure to strong light. Natural undyed colours may fade more than dyed ones. This should be taken into consideration when choosing floor coverings for areas that experience strong light or direct sunlight.

### Pile reversal

All velvet carpets may occasionally show pile reversal. This is a natural phenomenon resulting from local conditions where a carpet is laid, causing sections of carpet pile to change direction, so reflecting the light differently. Despite a great deal of research, no common manufacturing process has been found to cause pile reversal so it is not a manufacturing fault. Pile reversal may change appearance but will not affect wear. In some cases, professional carpet cleaning companies are able to reset the pile.

### Underfloor heating

Most carpets can be used over underfloor heating systems, however wool is a thermal insulator and will slow the transfer of heat from floor to the air above, the thicker the carpet the greater the thermal resistance which is measured as 'tog'.

Research by the Carpet Foundation has found that carpets and underlays with a combined

thermal resistance of less than 2.5 togs do allow underfloor systems to work efficiently. Also that when tested in life sized chambers, the thermal resistance is lower than in laboratory tests i.e. carpet and underlay combinations with laboratory tested values of 3.5 togs, perform in real life situations closer to 2.5 togs.

Jacaranda has laboratory tested the thinner and less dense carpets in our range, and their tog values which vary upwards from Sikkim at 0.71 are listed on page 52-55. We believe that underfloor heating correctly installed and maintained will not affect your Jacaranda carpet, but carpets may slow heat transfer depending on their thickness and density. You should consult your heating manufacturer about recommended tog ratings, and your carpet fitter as to the best underlay to use.

### Colour matching

Jacaranda can colour match the following broadlooms: Agra, Rajgarh, Rampur, Ranila, Sikkim, Santushti and Simla. We can also make-to-measure, custom coloured Himalayan, Agra, Sikkim, Santushti, Simla, Simla Bordered, Simla Stripe and Rajgarh Bordered rugs.

Colours can be matched to fabrics, paint samples and pantones or by using the chromatone pom sets held at our head office and London showroom. There is a small 'matching charge' so that Jacaranda can provide colour swatches for customer approval. Production times for colour matched products are 3 months on average, but Jacaranda will confirm lead time and price for each individual order.

## At point of order:

### Stock reservation

Jacaranda is happy to reserve stock for 48 hours.

### Size tolerance

While every effort is made to manufacture to the correct size, slight variations are unavoidable and natural fibres can shrink as they move to a different climate. For broadloom we advise that the customer order 3% more length than is required. Hand-woven rug sizes may vary by up to  $\pm 2.5\%$  and Himalayan by up to  $\pm 5\%$ .

### Colour variation

As with all natural products, colours may vary slightly between production batches. Please state at time of order where carpet cuts are to adjoin, so ensuring that those cuts are supplied from the same colour batch. 4m and 5m broadloom rolls are likely to come from different dye batches. The colour of samples may also change over time especially if exposed to strong sunlight. If an exact colour match is essential, please reserve stock and ask Jacaranda to send a cutting from that batch, we will be happy to oblige.



# DELIVERY AND FITTING

## Delivery

Our standard delivery times within mainland Britain are:

- 5 working days approx for stock rugs
- 7 working days approx for broadloom
- An average of 5 weeks for rugs & runners made-to-measure from UK broadloom stock
- An average of 12 weeks for products colour matched or made-to-measure at source
- 18 weeks production for Himalayan rugs, plus six weeks to agree CADs and colours for bespoke designs. Large rugs will take longer
- For all bespoke products Jacaranda will confirm lead times at the point of order.

All standard deliveries must be to a business address with good access for HGV's. For broadloom deliveries, the driver will require help with unloading and delivery is to the ground floor access point only.

Please call our office for prices and times for 'express' or 'special' deliveries within Britain, as well as deliveries to Europe and further afield.

## Inspection

Our labour intensive processes are integral to the creation of our 'characterful' textures and wonderful natural colours. They cannot and do not set out to mirror the uniformity of 'machine made' carpet. Any slight variations in colour and weave in our hand-woven products are part of their 'handmade character' rather than 'faults'.

At Jacaranda we take quality control very seriously and each roll or rug is checked and rechecked. Despite our best efforts however the odd genuine error does slip through and strange things can happen in transit.

**Please ensure that all products are checked and any problems reported within 48 hours of delivery. If your floorcovering arrives with damaged packaging, please note the damage on the delivery note before signing for receipt. If you have any doubts about the product, please phone our office before fitting. Jacaranda cannot take responsibility for problems reported after the carpet has been cut and fitted.**

## Fitting broadlooms

Jacaranda recommends that carpets are fitted over good quality solid, underlay and stretched onto double grippers. Please do not use:

- Power stretchers which can damage hand-woven carpets
- Knee kickers on loop or cut & loop textures
- Self-adhesive carpet protector, which pulls threads when removed.

On mainland Europe, carpets are routinely stuck to the floor, and this method may be used for Jacaranda's broadlooms. Very heavy carpets such as Abha & Agra should always be stuck down. Carpets may be fitted over underlay by the double stick method.

All cut edges should be sealed using seaming cement and heat seaming tape should be used for all seams. Pile height may occasionally vary along seams of some velvets, necessitating a light

shear with a hand held micro shearer.

Details of these methods are explained on Jacaranda's fitting video which can be downloaded from [www.jacarandacarpets.com](http://www.jacarandacarpets.com).

## Rug underlay

This makes rugs more luxurious to walk on, can reduce wear, lengthen rug life and reduce rug movement or 'creep'.

Jacaranda stocks the best non-skid underlay on the market for rugs laid over hard floors and carpets. Offered in standard packages 120 x 180cm and 170 x 240cm, or cut to lengths 1.19m wide. Customers can choose whether to fit underlay flush to rug edge or 5-10cm smaller.

In heavy traffic locations, rotate rug regularly to spread wear and extend life.



Chatapur Night rug (page 12) with TEEBAUD® non-skid rug underlay



# CARPET CARE

## Stain proofing treatments

When deciding whether or not to stain proof your new carpet, please consider that stain proof treatments:

- Should be applied by a professional company with a good reputation
- Must be reapplied at regular intervals
- Can slow the rate of soiling and buy extra time to deal with spillages
- But can never offer complete protection
- And can lead to a false sense of security

It is normal for new wool carpets to 'shed' fibres especially where footfall is heaviest. If protective chemicals are lost with these fibres, carpets can soil faster in heavy traffic areas leading to uneven appearance.

## Regular maintenance

Vacuum carpets regularly using an upright cleaner on **cut pile carpets**, or a cylinder machine with a smooth nozzle on any **carpet with loops**.

Avoid using all cleaning chemicals sold for home use, some of which can discolour carpets. Detergent residue can become sticky when dry and subsequently attract dirt.

For an overall clean we recommend a dry extraction method carried out by a professional cleaning company.

## Spillages and stains

Act fast to pick up any solids and to blot up liquid with plain absorbent paper. Blot gently, changing paper as necessary. Do not rub or scrub as this can 'burst' the pile surface causing permanent damage. Leave the pile laying in the natural pile direction or restore gently to correct direction using a clean clothes brush. Leave to dry naturally.

### For residual stains:

For **wool carpets** only, dilute any remaining residue or stain with cold water (never hot) on a clean cloth, then blot and dry as above. Repeat as necessary. For unusual or stubborn stains always seek professional advice from a reputable cleaning company or visit [www.woolsafe.org](http://www.woolsafe.org) for advice. Avoid carpet cleaning chemicals sold for home use, which can discolour carpets or leave a dirt attracting, sticky residue.

**Viscose carpets** are more delicate than wool. Water changes the texture of the viscose, causing the pile to reflect light differently to give the appearance of a stain. Do not add water and do not rub or brush the pile. For all stains consult a professional carpet cleaner straight away. They should recommend cleaning of the entire carpet (rather than spot treatment) using a dry extraction rather than a wet cleaning method.

The **TENCEL®** yarn used for Jacaranda's Agra, Sikkim, Santushti and Simla broadloom has the same beautiful lustre as viscose but is more hard-wearing and better to clean. Water spills will not affect its texture, and if they leave a slight yellow ring, this should disappear with time and wear. **TENCEL®** can be professionally cleaned with care.

Jacaranda aims to maintain on their website at [www.jacarandacarpets.com](http://www.jacarandacarpets.com), a list of reputable, professional carpet cleaners in the UK and abroad.



Heavy Velvet Dark Grey (page 31)

## Shedding

All wool cut-pile carpets will shed fibres when new to create fluff. This is normal, not related to quality, and will not affect appearance or durability of your carpet. It is simply wool fibres released from the yarn ends where they are cut to create the pile. Vacuum regularly and shedding will soon cease.

## Sprouting or pulled loops

Uneven tufts can sometimes occur in hand-woven carpets. Dogs, cats or stiletto heels can catch and pull loops proud of the pile. Carefully cut these tufts or loops with sharp scissors, do not pull as you may damage the carpet.

## Crushing

Furniture can depress or crush carpet pile over time. This effect can be reduced by occasionally re-arranging heavy furniture so that the weight is not concentrated in one place.

## Moths

All Jacaranda's woollen carpet and rugs are woven from anti moth treated yarn.